



artistic image

# PLACEMENT REPORT 2024-25

# Content

Manufacturing: Driving India Ahead 02

NAMTECH: Building Talent for Smart Manufacturing 03

About NAMTECH 04-05

Message From Director General 06

Breaking Myths & Building Futures 07-09

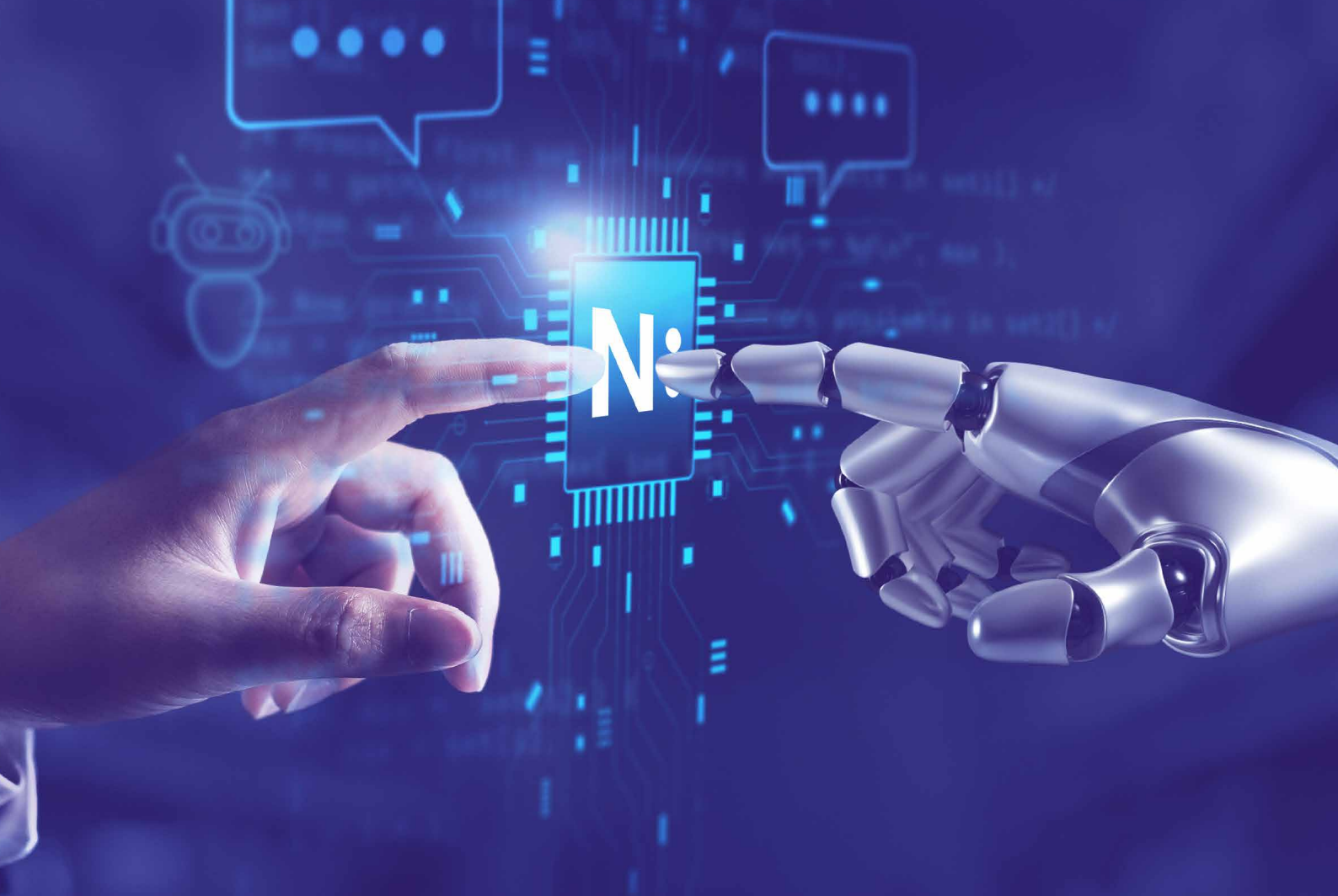
Message From Director Placements 10

Student Stats 11-13

Placement & Roles Offered 14

Our Proven Approach to Placements 15

---



## Smart Manufacturing is Powering India's Next Industrial Leap



The manufacturing sector currently contributes **~17%** to India's GDP and is expected to increase to **~25% by 2030** under the Make in India initiative.



**~6.8 crore** people were employed in the manufacturing sector in India in 2022-23.



India is expected to generate **~3.5 crore (35 million)** new manufacturing jobs in the coming years through industrial expansion and policy initiatives.

Source:

1. <https://www.pib.gov.in/PressReleasePage.aspx?PRID=1962137&reg=3&lang=2=>

2. <https://www.dataforindia.com/measuring-manufacturing>

3. <https://www.pib.gov.in/PressReleasePage.aspx?PRID=2168711>

# India's smart manufacturing future demands a new generation of industry-ready professionals

NAMTECH was established to develop the next generation of manufacturing professionals for high-growth sectors such as for Smart Manufacturing, Sustainability, Semiconductor Manufacturing, Advanced Robotics, Automotive Technology, and Data Analytics & AI, supporting India's vision of Viksit Bharat 2047.

Launched in 2023, our flagship International Professional Master Program (iPMP), now the Master Program (under UGC nomenclature), integrates engineering expertise with managerial capability, creating a new pathway for engineers to become Techno-Managers.

*In just three years, NAMTECH has trained 150+ students, with 55% fresh graduates, and achieved a 100% placement record. Graduates have secured roles with companies such as Addverb, Micron, JBM, and Hyundai with packages reaching ₹16 LPA and an average of ₹8 LPA.*



artistic image



# About NAMTECH

**NAMTECH is India's First Institution Driving Manufacturing Innovation.**

NAMTECH is committed to meet the demand for Industry 4.0 & Industry 5.0 ready professionals by developing talent that is both technically competent, and conscious towards the environmental & social impact of innovation.

NAMTECH is structured around five MET Innovation Schools – Manufacturing Technologies; Manufacturing Design & AI; Robotics; Sustainability; and Technical Education – supported by two MET Innovation Center (The Centre of Advanced Computing & AI and the Centre of Management Studies) and a Centre of Excellence in Automotive Engineering.

Each school & centre offers a full-time Master Program.

Its portfolio includes six techno-managerial master programs designed for high-growth sectors, developed in collaboration with leading global institutions and industry partners.

Complementing this, NAMTECH's School of Technical Education, established in partnership with ITE Singapore, supports technician education and capacity-building within India's ITI ecosystem.

**The Ministry of Education, on the advice of UGC, has issued a Letter of Intent (LOI) to NAMTECH for consideration as a deemed-to-be -university under the distinct category.**

NAMTECH is shaping a model education ecosystem that integrates advanced learning, applied research, and industry collaboration, with a strong emphasis on innovation, inclusivity, and regional relevance.

The initiative aims to elevate higher and technical education beyond skill development towards the creation of knowledge leaders, innovators, and entrepreneurial talent who can drive long-term industrial and societal transformation.

### The model comprises four key components:

#### 100% Experiential Programs

Immersive, practice-led academic programs designed to integrate classroom learning with real-world industrial challenges, live projects, and advanced laboratory exposure.

#### Best-in-Class Campus

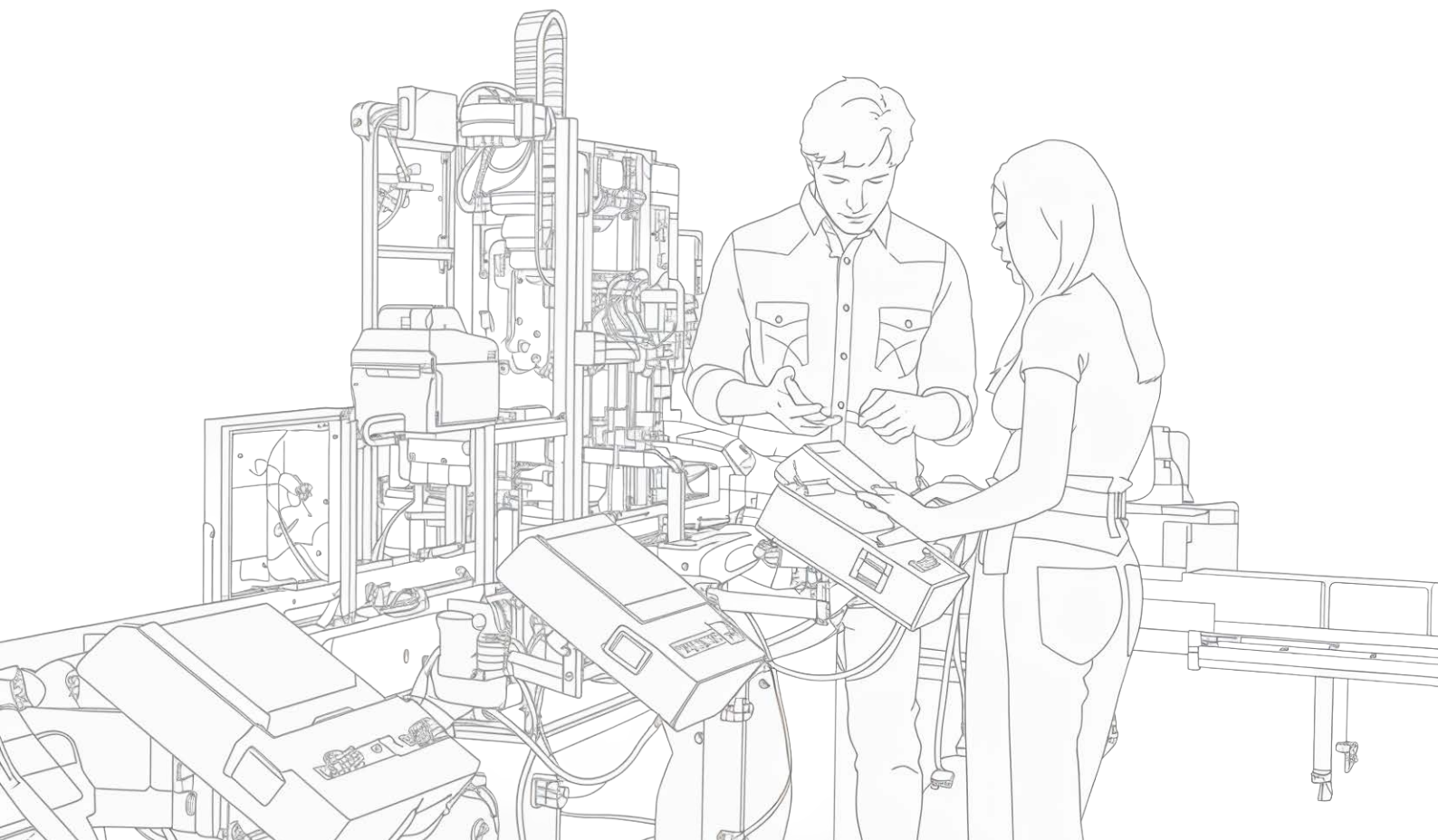
A purpose-built, integrated education and innovation campus envisioned as a living laboratory for advanced manufacturing, digital technologies, and sustainability-led solutions.

#### Groundbreaking Industry & Academic Collaborations

Strategic partnerships with leading global universities and industry players to co-create curricula, enable faculty exchange, and develop translational research & innovation pathways.

#### Outreach & ITI Upgradation

Structured engagement with regional ecosystems and the ITI network to strengthen foundational technical education, enable pathways into advanced learning, and broaden access to future-ready manufacturing and engineering capabilities.



Message from  
**Director General**



**Dr. Ibrahim Hafeezur  
Rehman**

Director General & CEO,  
Dean Academic Advancement; R&D  
Consultancy  
Director, School of Sustainability

Hello,

**Tomorrow's leaders must understand technology, management, design, and the human side of change. At NAMTECH, we develop techno-managers, who think smarter, move faster, and tackle complex challenges across manufacturing, robotics, sustainability, semiconductors, and more.**

At NAMTECH, we are shaping the future of Manufacturing Engineering Technology (MET) by developing industry leaders and impactful knowledge. Recognized as the Institute of Manufacturing Innovation, we offer two-year full-time Techno-Manager Master programs to build future-ready technologists.

Our specialized programs encompass high-growth sectors such as Smart Manufacturing, Semiconductor Manufacturing, Automotive Engineering, Robotics, Sustainability, and Data & AI, that are co-created with industry and globally leading academic partners.

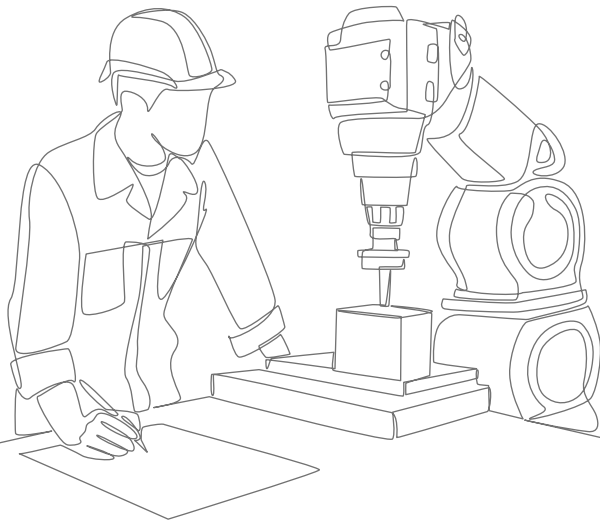
With a vision to train 3 million learners in Industry 4.0 and 5.0 technologies, we also run the International Professional Technologist Program (IPTP) for ITI and diploma students.

# Breaking Myths. Building Futures.

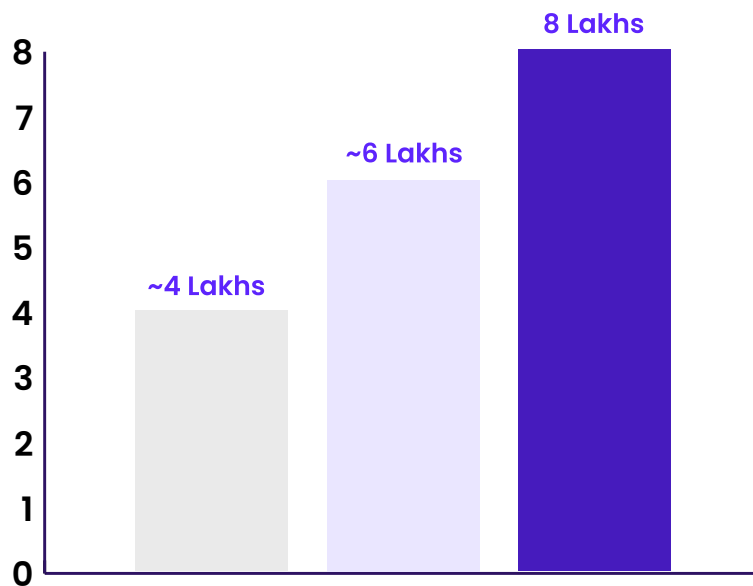
01

## Myth 1:

Students in the manufacturing sector receive lower salaries.



**NAMTECH is a trendsetter – offering better salary to students in Manufacturing Sector**



**~4 Lakhs**

Average Entry-Level Salary in Core Engineering Disciplines (such as Mechanical Engineering)

**~6 Lakhs**

Average Salary in Core Engineering Disciplines (such as Mechanical Engineering) (With 1-5 Years of Experience)

**8 Lakhs**

Average Salary Offered to Graduates of NAMTECH (After Completion of One Year iPMP Program)

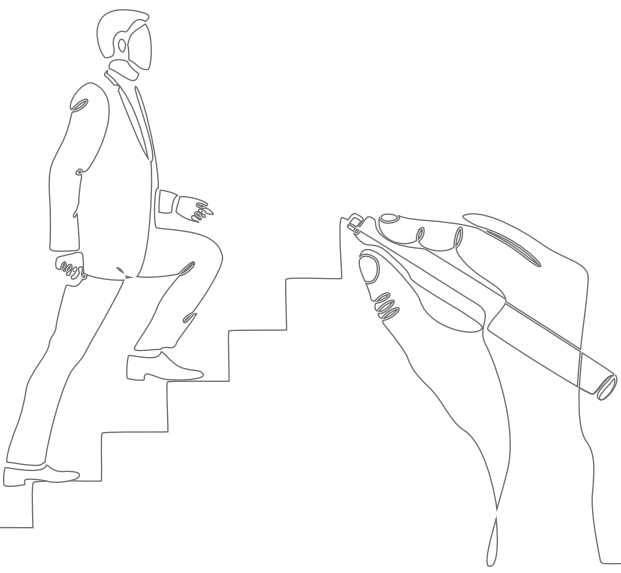
Source:

1. Physics Wallah | 2. Collegedunia

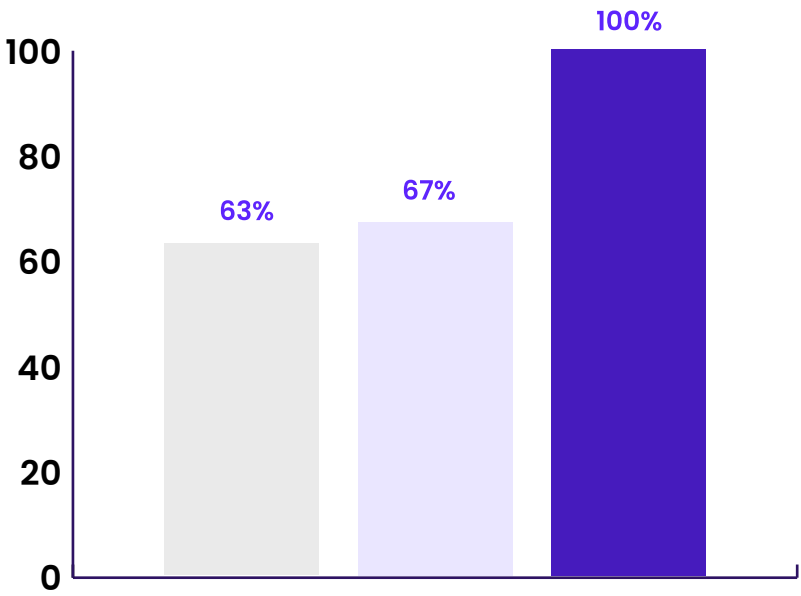
02

### Myth 2:

Students pursuing manufacturing-related courses have lower employability compared to those in other sectors.



**NAMTECH is redefining excellence in manufacturing education with a groundbreaking achievement, placing all eligible iPMP students.**



**63%**  
Employability of Students Pursuing Core Engineering Disciplines (such as Mechanical Engineering)

**67%**  
Placement Rate of Students Pursuing Core Engineering Disciplines (such as Mechanical Engineering) in 2024-25

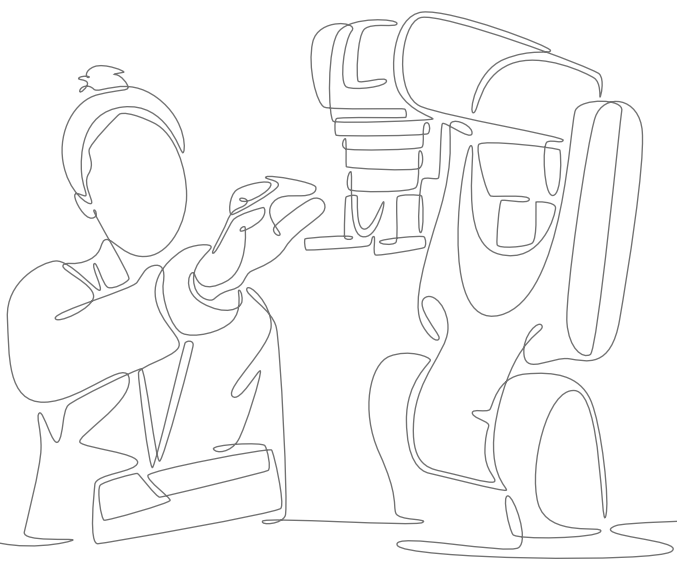
**100%**  
Placement Rate of Eligible Students at NAMTECH

Source:  
1. India Skills Report 2026 | 2. Education Times

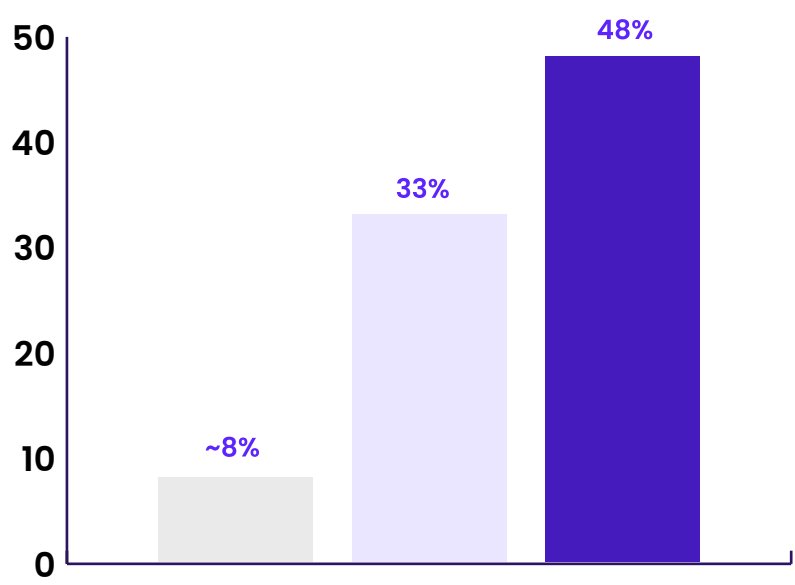
03

### Myth 3:

Participation of women in the manufacturing sector is low.



**NAMTECH shows that women just don't belong in manufacturing - they're thriving**



**~8%**  
Enrollment of Women in Core Engineering Disciplines (such as Mechanical Engineering)

**33%**  
Share of women in Manufacturing Workforce

**48%**  
Female students at NAMTECH in the Current Cohort

Source:  
1. Aishe 2021-22 | 2. International Labour Organisation

Message from  
**Director Placements**



**Ms. Nandini Dasgupta**

Director, Corporate Partnerships & Placements

Hello,

The placement season for the International Professional Master Program (iPMP), Batch 2024–25, concluded successfully, highlighting NAMTECH's growing reputation for industry-ready talent in manufacturing, engineering, and emerging technologies.

Out of 97 students, 86 opted for placements and all were placed, achieving a 100% placement rate. 44 recruiters, including 19 Tier-1 companies, participated.

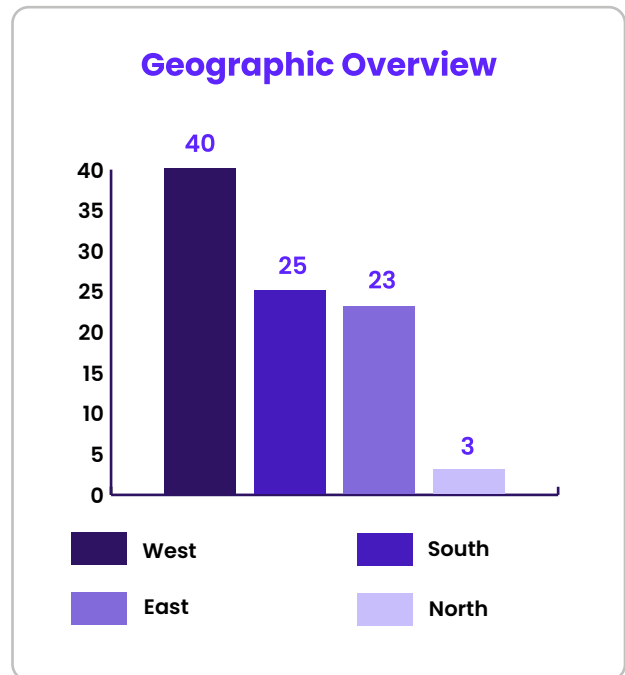
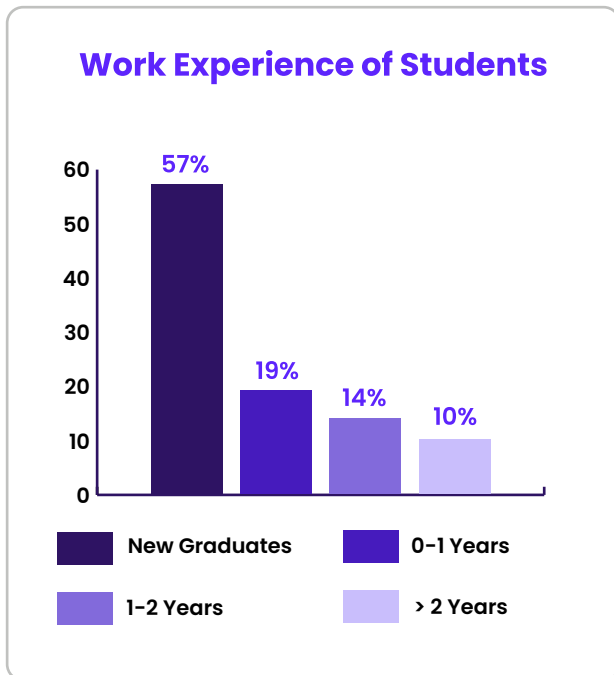
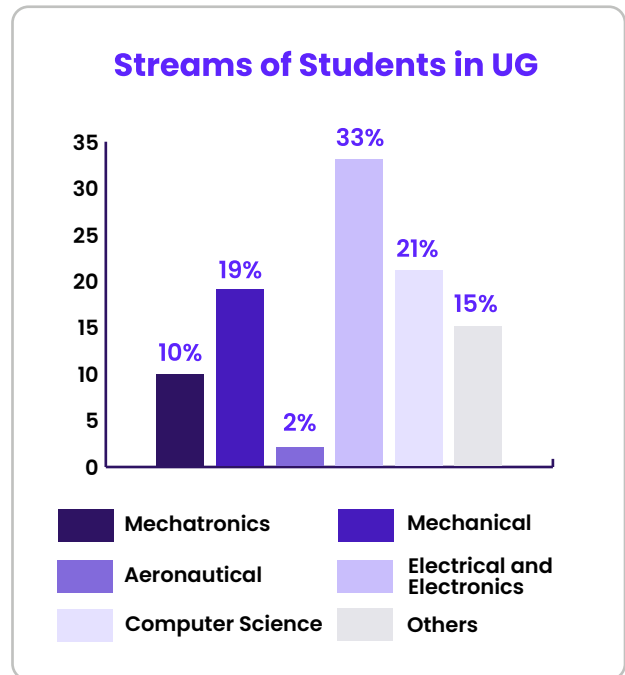
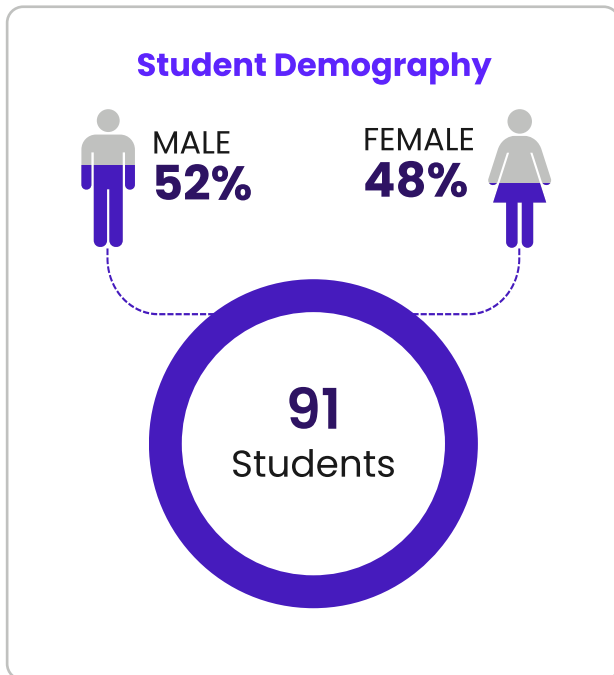
Around 41% of students received packages above ₹8 LPA, and the overall delta in CTC increased by about 91% compared to their graduation compensation.

Recruiters came from sectors such as semiconductors, automotive, robotics, sustainability, consulting, and advanced manufacturing.

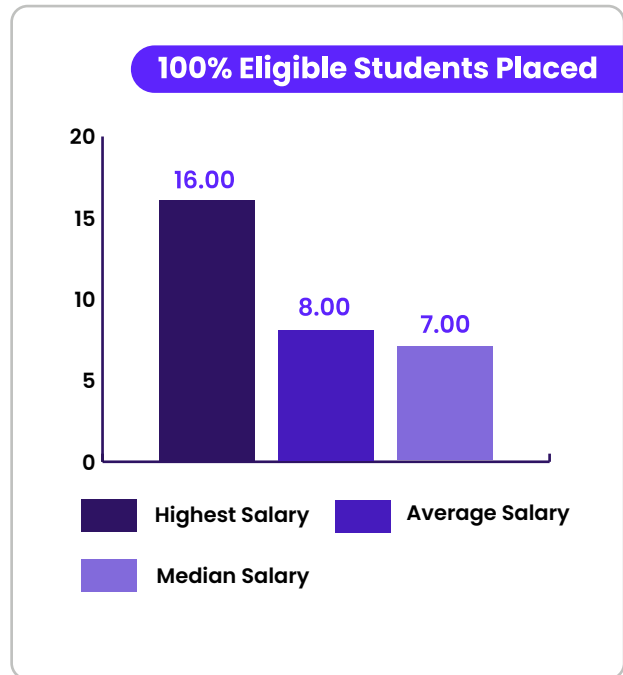
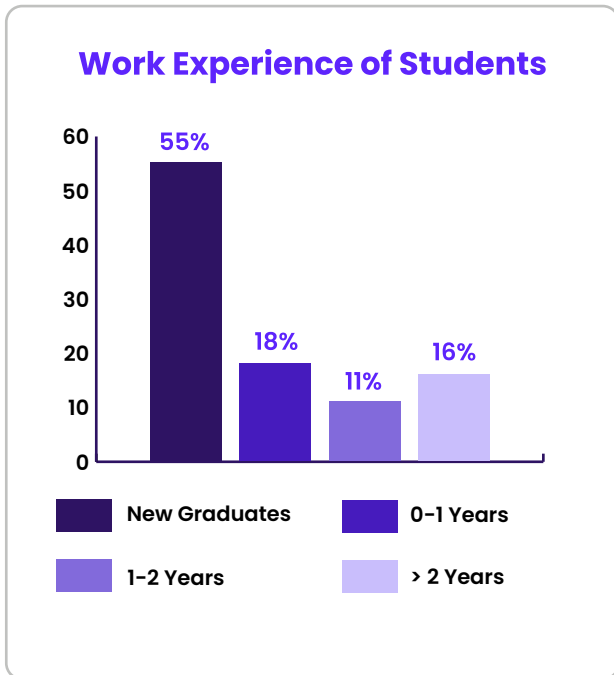
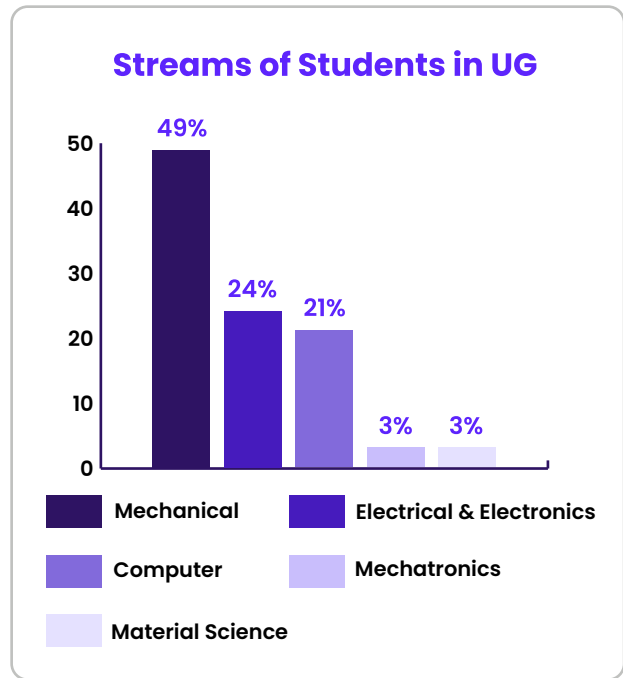
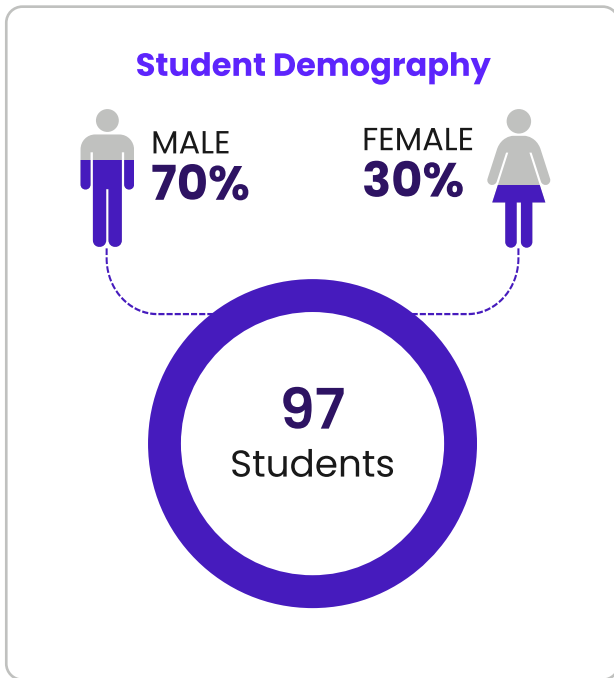
Over 300 companies were approached, with 122 active discussions during the year and several new strategic partners joining the placement network.

NAMTECH continues to focus on strengthening student fundamentals, improving readiness for advanced roles, and expanding industry collaboration to prepare future-ready professionals for global manufacturing and Industry 4.0 ecosystems.

# Student Stats – Batch of 2025–26



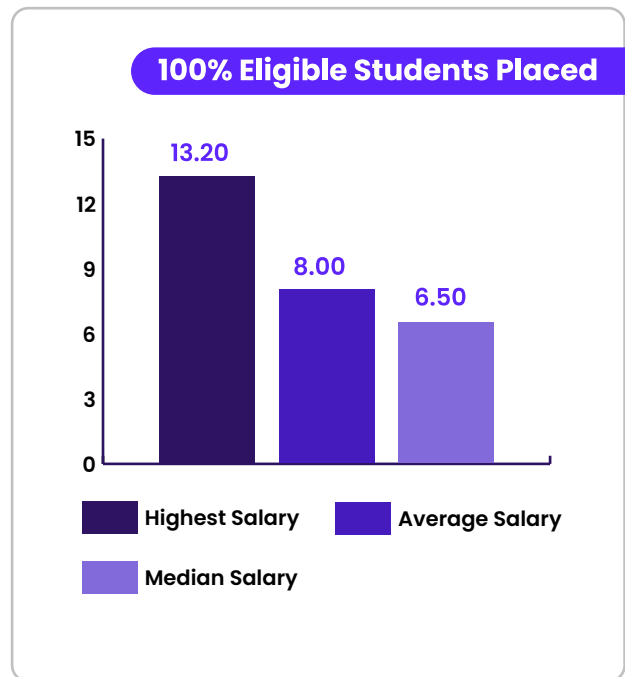
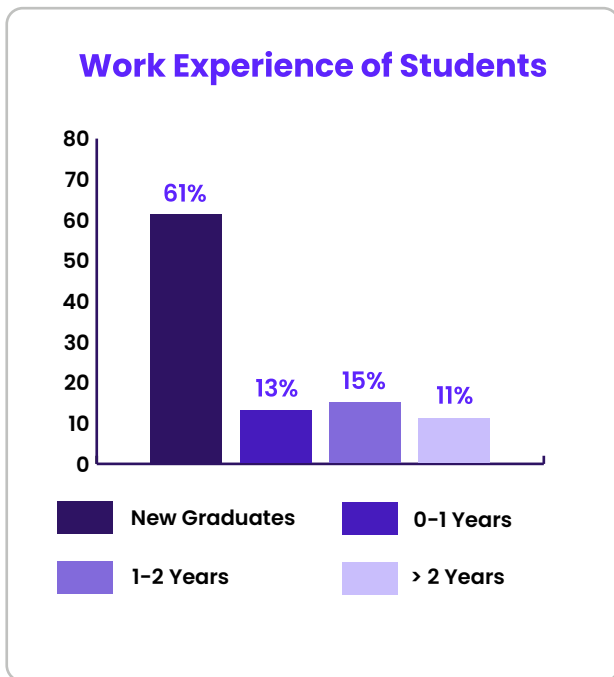
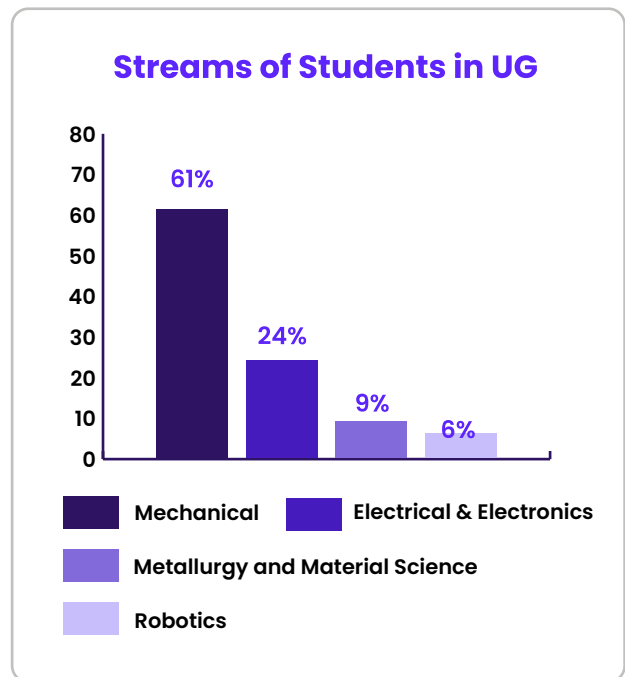
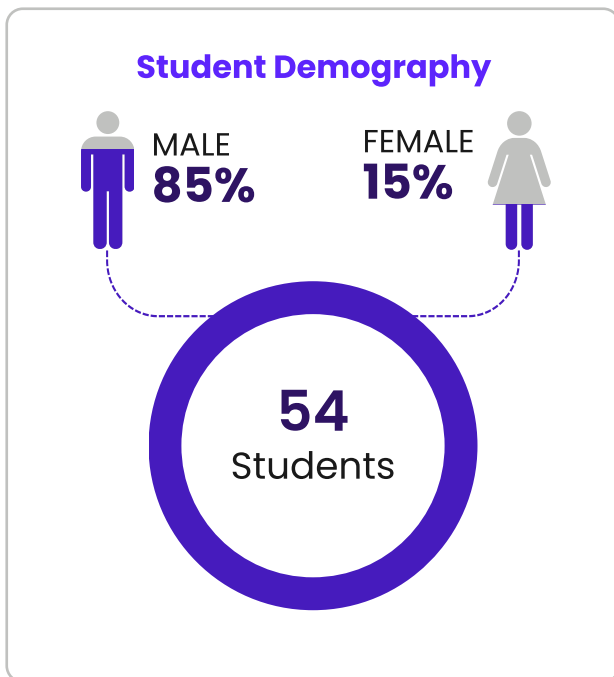
# Student Stats – Batch of 2024-25



## Prominent Hiring Partners



# Student Stats – Batch of 2023-24



## Prominent Hiring Partners



# Placement – Roles Offered

**NAMTECH has consistently attracted opportunities that align with its 'Technomanagerial' focus**

## Job Roles after Engineering Courses

- Mechanical Engineer
- Maintenance Engineer
- Electrical Engineer
- Process Engineer
- Field Service Engineer
- Trainee Engineer
- Asset Monitoring Engineer
- Production Engineer
- Quality Control Engineer
- Assistant Engineer
- Testing Engineer
- Site Engineer
- Inspection Project Coordinator
- HVAC Site Engineer

## Job Roles after PG Program at NAMTECH

- Application Engineer
- Assistant Manager - Quality
- CAD Designer
- Electrical Design Engineer
- Manufacturing Data Analyst
- PGET (Post Graduate Engineering Trainee)
- Project Engineering
- Assistant Manager
- Business Development
- Design Engineer
- Lean Specialist
- Mechanical Design Engineer
- Process Development Engineer
- Research Analyst



The industry today demands professionals who combine deep technical expertise with strong managerial acumen, forming a new class of future-ready talent.



In response, NAMTECH is shaping 'Techno-Managers', graduates who are equipped with end-to-end capabilities across manufacturing, engineering, technology, and management, enabling them to contribute meaningfully from day one.



Recruiters are increasingly acknowledging this differentiated value proposition, showing strong confidence in NAMTECH's talent and offering roles that perfectly align with the institute's ethos and the competencies its students are trained to master.

# Our Proven Approach to Placements is Engineered for 100% Success



## Career Coaching & Mentoring

Tailored guidance that connects student individual strengths & career goals with real-world industry opportunities



## Aptitude & Technical Assessments

Insightful evaluations that map student's analytical & reasoning capabilities to drive focused skill enhancement activities and enhance industry readiness



## Mock Interviews

Targeted interview preparation designed to sharpen student's articulation, build executive presence, and promote on-the-spot thinking



## Industry Expert Talks & Alumni Interactions

Engaging talks and masterclasses from industry leaders and alumni that open student's mind to emerging trends, innovation, and growth opportunities.



## Capstone Projects

Hands-on projects with industry partners that help students apply their knowledge, solve real challenges, and grow as a strategic thinker.



## Feedback & Continuous Improvement

Regular feedback and reflection cycles designed to help students track growth, strengthen skills, and stay ready for the future of work.

Want your career to be at the forefront of smart manufacturing and industrial innovation?

**Scan the QR and enquire now.**



**Address:**

Research Park, IIT Gandhinagar, Palaj, Gandhinagar, Gujarat - 382055, India

[www.namtech.ac](http://www.namtech.ac) | [info@namtech.ac](mailto:info@namtech.ac) | +91-8799299909



Scan here to enquire